

Item No.: 12013002

**Solar Concrete Roof Mounting Structure**

**-Cement base(double poles)**

Wind load: 30m/s~55m/s

➤ **Design criterion**

Basic Wind Pressure: 0.5-0.8 KN/m<sup>2</sup>

Panel size: 1650x992 mm 2x10 Portrait

Covered area : 3.6X10.3 M<sup>2</sup>

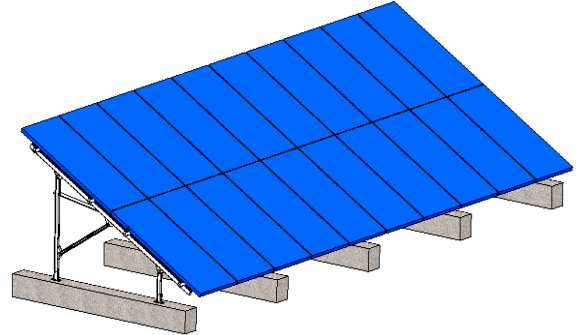
➤ **Product Introduction**

Product Material: Q235 (Hot-galvanized steel, thickness70um)

Fasten Material: Stainless steel (SS304)

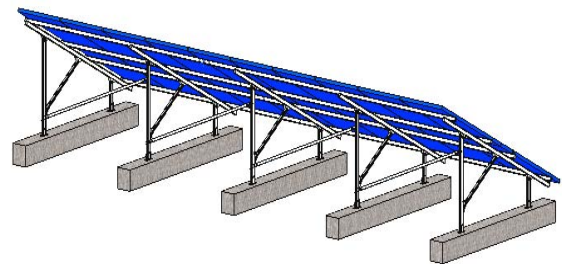
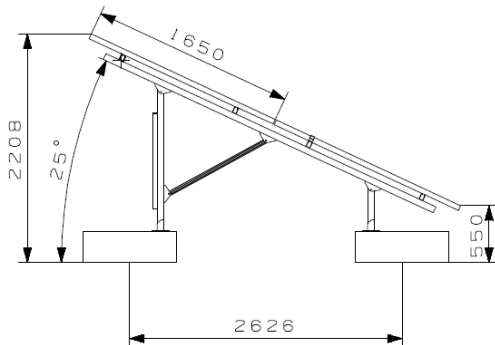
Angle: 15~45degree

The distance from lowest point of panel to rooftop: 300↔500 mm

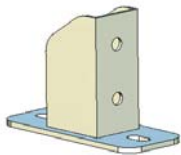


➤ **Product Characteristic**

- Double poles
- High strength structure
- ✧ Apply to flat roof power generation
- ✧ Apply to the high load capacity roof
- ✧ Foundation bolt is pre-installed in the cement base
- ✧ With distance from rooftop to the lowest point of panel



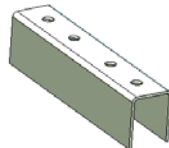
➤ **Components**



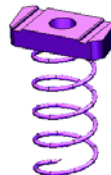
Foot fastener



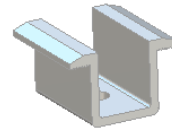
triangle fastener



rail connector



square nut



upper clamp



end clamp

Room 1005, No. 939 JinQiao Road, Pudong, Shanghai China 200136

Tel: 61600231, 61600232, 61600233

Email: [christina.rao@frontierack.com](mailto:christina.rao@frontierack.com)

[www.frontierack.com](http://www.frontierack.com)